

B M W

NEW

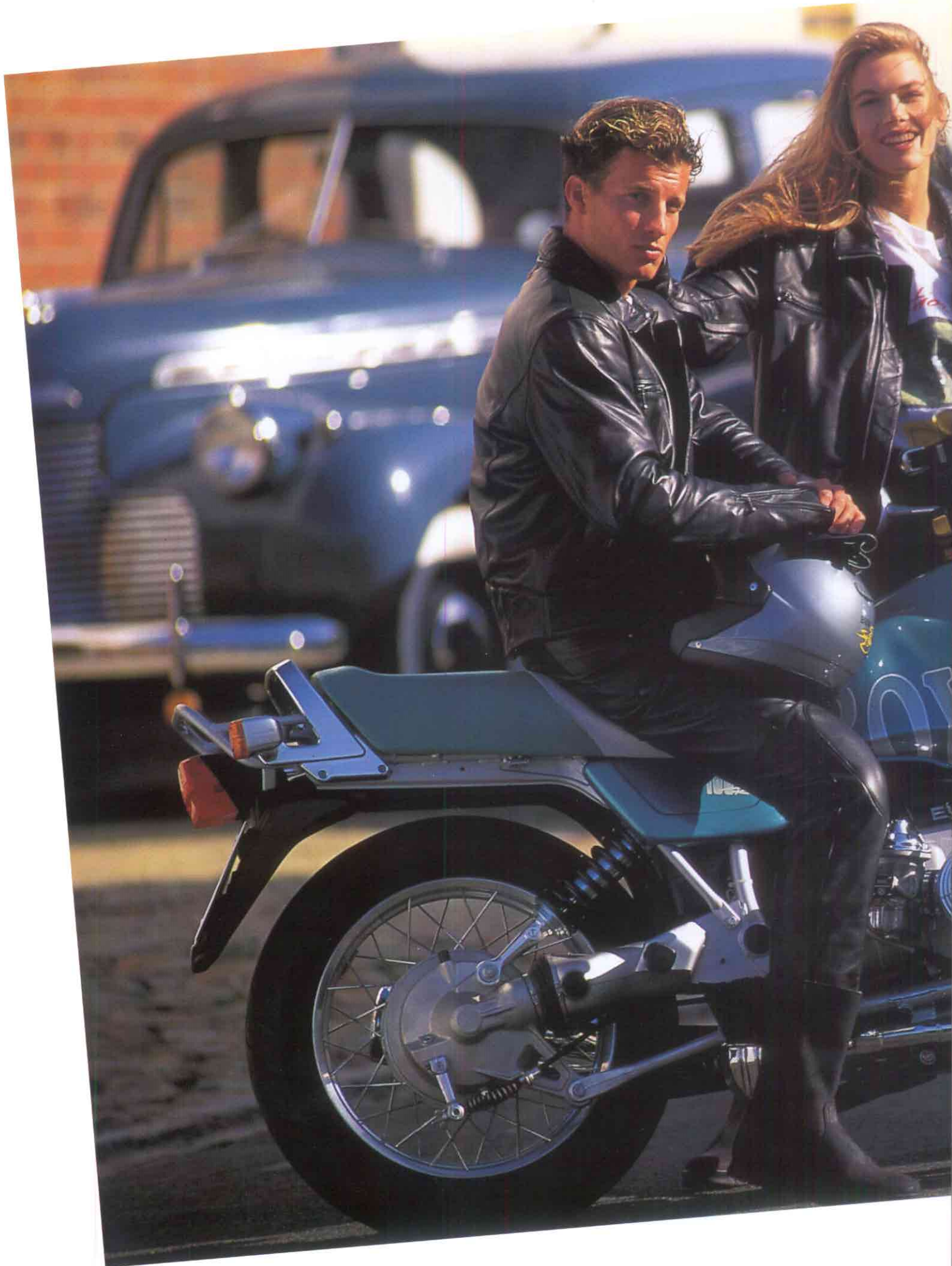
PRODUCTS

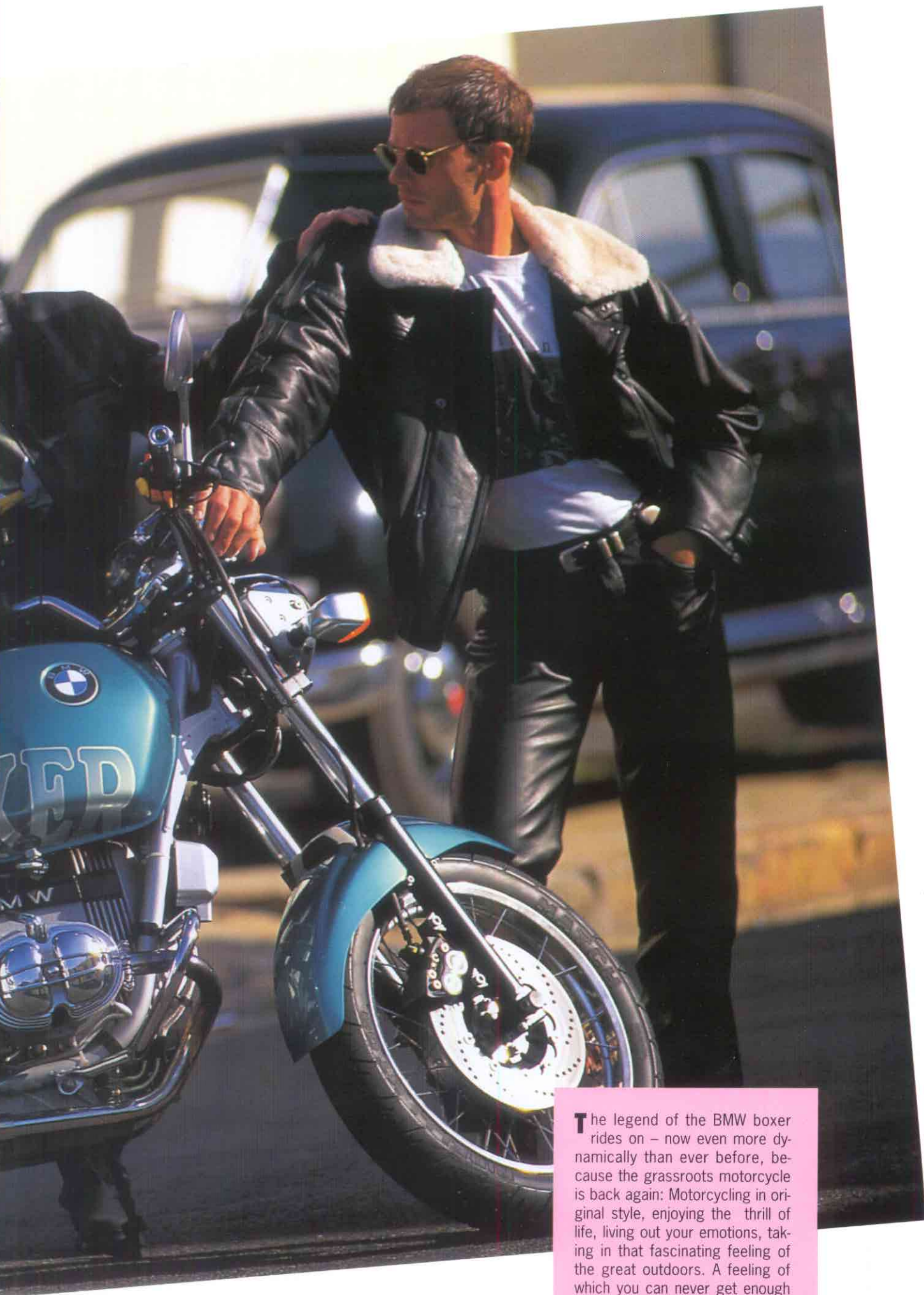
1992

**BMW MOTORCYCLE
EQUIPMENT AND
RIDER WEAR**



BACK TO THE FUTURE.





The legend of the BMW boxer rides on – now even more dynamically than ever before, because the grassroots motorcycle is back again: Motorcycling in original style, enjoying the thrill of life, living out your emotions, taking in that fascinating feeling of the great outdoors. A feeling of which you can never get enough – especially when it opens up a bright new future to the good old days...

EVERYTHING A ROADSTER NEEDS.

It's just like the best years of life coming back – the new BMW R 100 R Roadster appearing on the scene. A whole world of its own, not "just" a motorcycle. A classic through and through, timeless but absolutely up-to-date in every respect. Just the way you would imagine a roadster on two wheels.

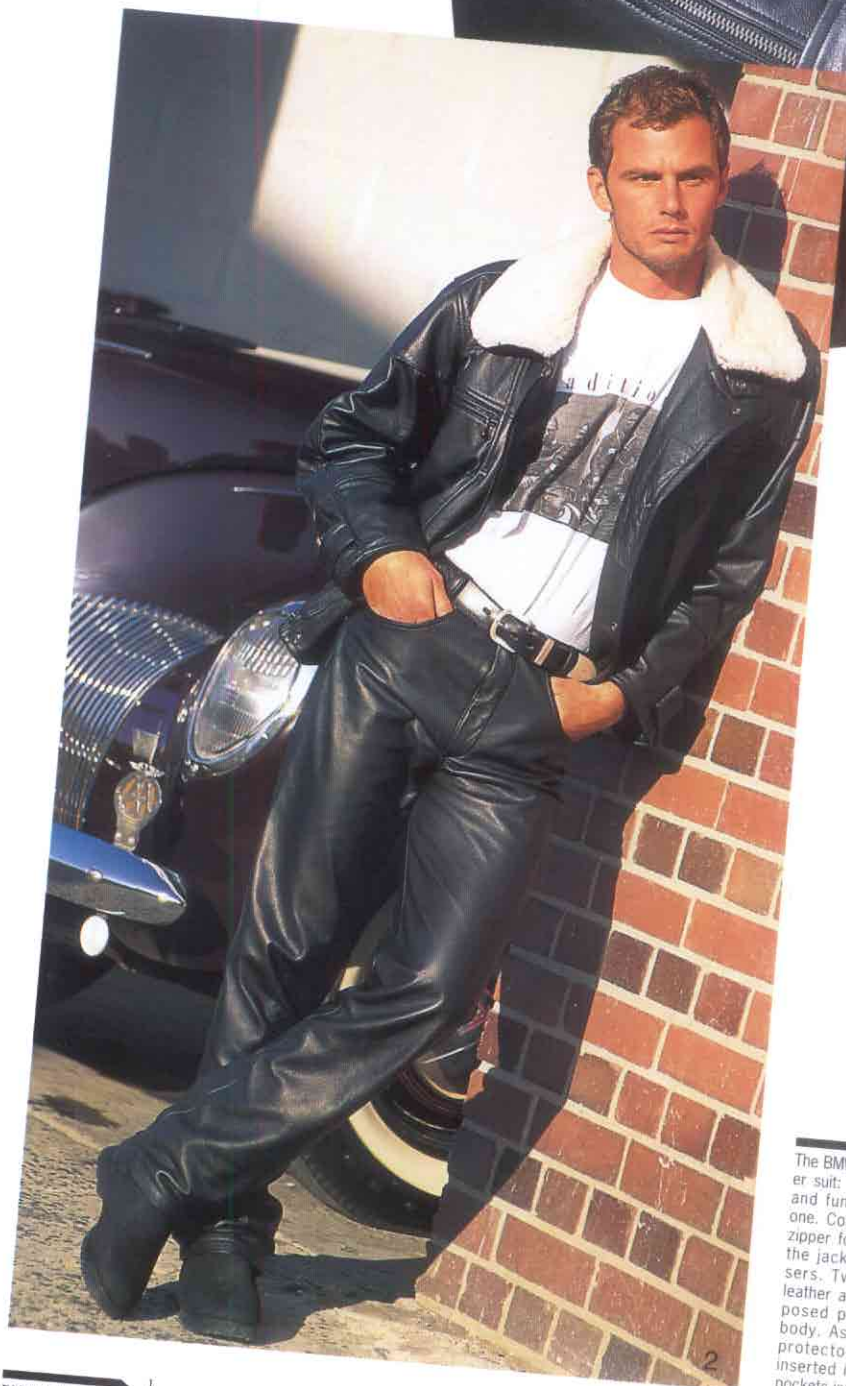
Leather and chrome reminiscent of the good old days plus the most advanced high technology for the future.

The perfect match for this outstanding machine is of course BMW's Classic leather suit – a two-piece combination, casual in style and jet black from top to bottom. With a number of useful pockets, a removable lambskin collar and a zipper all the way up to your neck. Plus inside pockets for protector pads providing extra safety.

You always look good wearing a suit of this kind – even without your motorcycle.



1
BMW T-shirts made of top-quality cotton are ideal beneath your suit. Complete with a nostalgia imprint.



2
The BMW Classic leather suit: trendy, casual and functional all in one. Complete with a zipper for connecting the jacket and trousers. Two layers of leather around all exposed parts of the body. As an option, protectors may be inserted into special pockets inside.

3
BMW Roadster leather gloves. Black and classic, made from finest cowhide with rough leather padding and cotton lining. Long sheaths and a rubber band around your wrist keep out the wind at all speeds.



3





You will also be thrilled by BMW's new Roadster leather suit. Body-contoured especially for the sports rider, this suit combines first-class finish with the very best material, since BMW always uses the finest 1.2 mm (0.05") cowhide. Particularly exposed parts of the body are cushioned by special protectors, the trousers featuring soft protector pads around the knees and hips, the jacket removable hard-shell protectors on your shoulders and elbows.

Matching gloves and boots round off your Roadster outfit. And the final touch is provided by BMW's casual T-shirt with its nostalgic imprint.

The rider who wishes to enhance his BMW R 100 R Roadster to final perfection also has everything he needs. For the BMW chrome kit comes with all original parts in chrome as a harmonious match for the BMW Roadster: cylinder protection bars, fork stabilizer, cylinder head cover, carburettor cover, rear grab bar, tank cap, rear-view mirrors, instrument console, exhaust nuts, handlebar weights and direction indicator housings.





6

6
Accentuate the classic circular instruments of your BMW R 100 R Roadster even better with the BMW chrome kit featuring special instrument covers.



7

7
Beautiful to behold also from the side: The classic cylinder head cover looks even more attractive in full chrome finish. Other highlights of the BMW chrome kit are the carburettor cover, exhaust bolts and cylinder protection bars.



8

8
Chrome from tip to toe: The rear grab handle and direction indicator rings on the R 100 R Roadster.

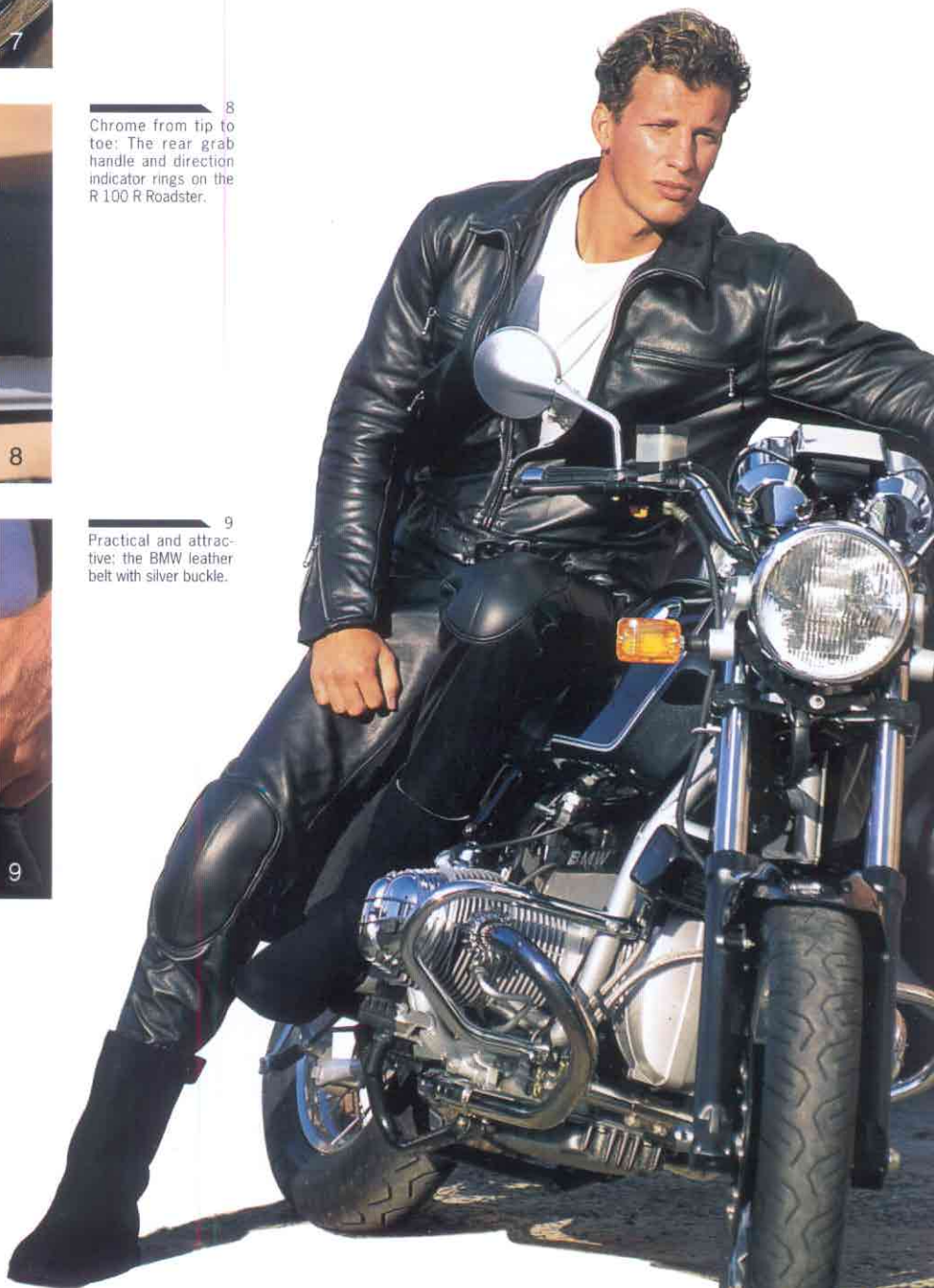


9

9
Practical and attractive: the BMW leather belt with silver buckle.

4
Classic footwear. The BMW Roadster leather boots are made of 2.4 mm (0.1") thick leather. Rising high up your legs and with special padding round the ankles, these boots are not only strong and water-repellant, but also extremely comfortable.

5
Roadster motorcycling in grand style. Wearing BMW's Roadster leather suit you look just right on your machine. The jeans-style trousers and extra-short jacket are also available individually.



5

COZY AND DRY EVEN IN THE WORST OF WEATHER. WITH BMW'S NEW GORE-TEX® MOTORCYCLE WEAR.



1 Strong, warm and secure: BMW GORE-TEX® boots combine an active breathing effect with 100 % resistance to wind and water. Stable reinforcement around the sides protects your ankles. An additional reinforcement pad at the front is for shifting gears smoothly and reliably.

2 Warm and dry in rainy weather – cool and breezy in bright sunshine: BMW's new and trendy GORE-TEX® suit is simply ideal in all kinds of weather.





2



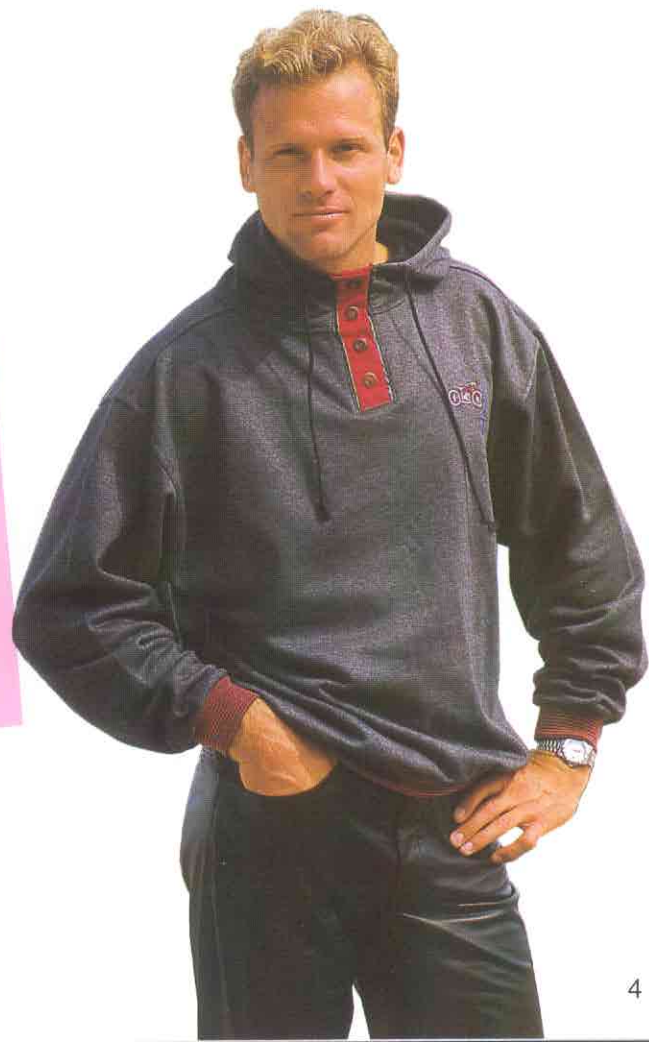
3

What's the best way to enjoy your motorcycle even when the weather suddenly changes? Simple: BMW's two-piece GORE-TEX® suit keeps you dry when it rains and pleasantly cool in hot sunshine. Because GORE-TEX® makes the impossible possible: Whenever water comes from the outside it's 100% watertight. But skin moisture can escape freely from inside, keeping you cool and feeling pleasant in BMW's new GORE-TEX® suit even in hot summer weather.

Added to these outstanding benefits, the GORE-TEX® suit offers maximum safety and practical value thanks to its multi-layer composition of Cordura, interwoven cotton and removable SECUFLEX protectors. Double cuffs with elastic bands, a removable collar and an inner bag for the back protector add the final touch. And to keep you really dry from tip to toe matching gloves and boots made from GORE-TEX® are also available.

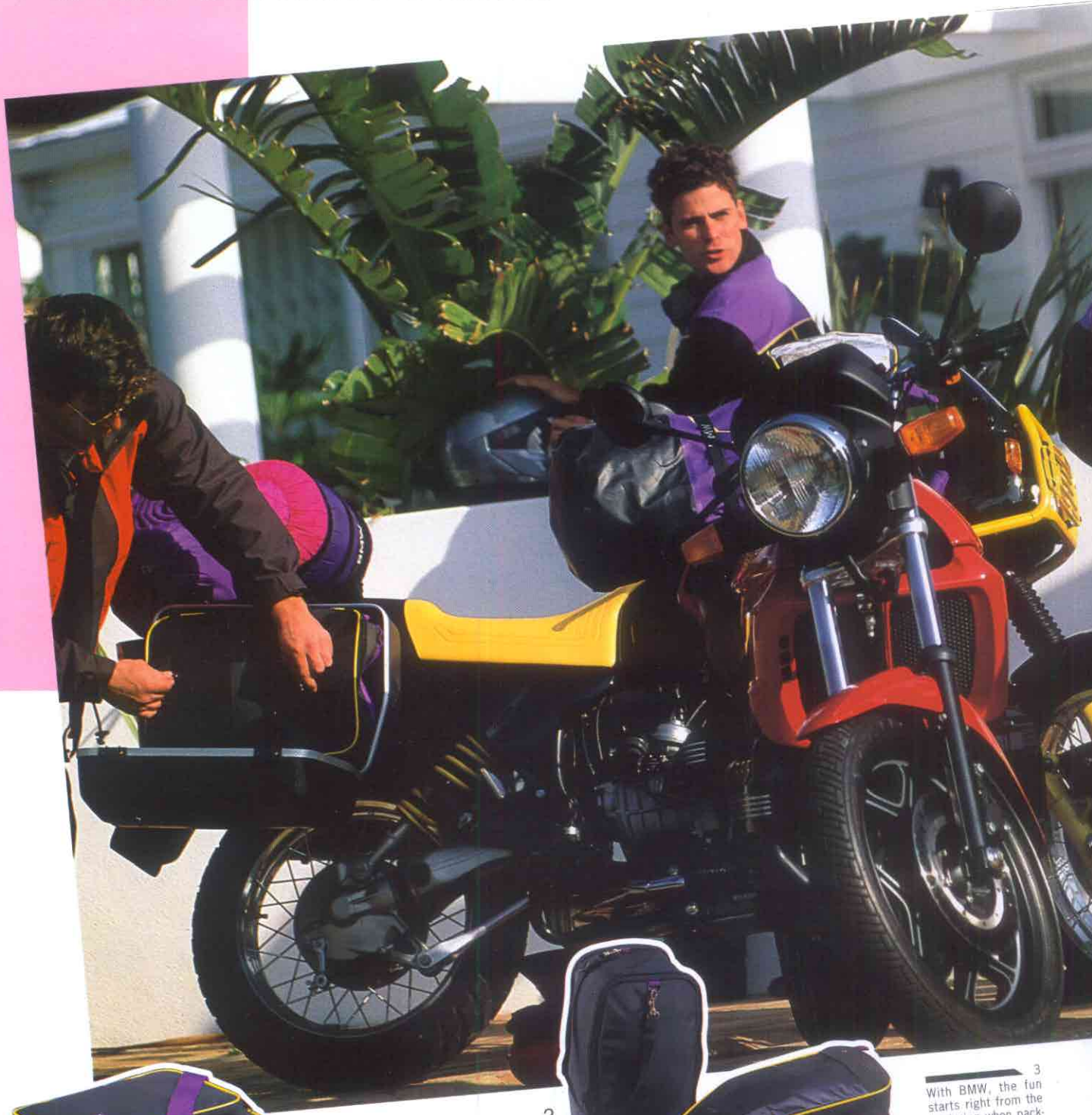
3
For motorcycling pleasure 12 months a year: BMW's GORE-TEX® summer gloves made from nylon, leather and kevlar are extremely tear-proof, extra-light and pleasant to wear. And BMW's GORE-TEX® winter gloves (left) keep you cozy and warm even in sub-zero temperatures through their thick polyester padding.

4
The secret of feeling good: BMW's hood shirt fits perfectly under your motorcycle jacket. And on cool days you can conveniently pull up the hood beneath your helmet.



4

NOW WRAP IT ALL UP IN BMW MOTORCYCLE CASES.



1

1
BMW inner bags fit exactly into the BMW topcase with its capacity of 10 or 35 ltr (0.7 or 1.23 cu ft). So that removing the contents either at home or wherever you may be is really easy. Another advantage is that the bags keep your clothes tidy and neat.



2

2
The BMW Multivario tank bag adjustable to two different positions has now been further improved to make the map holder accessible from outside.

3
With BMW, the fun starts right from the beginning when packing your bags. Because BMW's range of motorcycle bags and cases gives you everything you need. The ignition key, for example, also fits the locks of your cases (now also on the touring cases of the BMW GS models).



Should you ever have problems stowing away your belongings you can count on BMW to provide the solution. For we offer a wide range of cases and bags constantly enlarged and further improved.

The latest example is BMW's new touring case with all kinds of special features: extremely strong side covers, top-quality locks, extra space and absolutely watertight seals.

To respond flexibly to your luggage requirements, the BMW Multivario tank bag offers everything you need ranging from modern looks to convenient new features such as the map holder accessible from outside and the integral rain cover. Plus, of course, the essential advantage of being able to vary its capacity from 11 - 28 ltr (0.39 - 1.0 cu ft).

BMW inner bags are particularly practical. For now you can pack conveniently at home and then simply remove the bags from your touring case or topcase once you've reached your destination - which means no more hassle fitting and unfastening the cases themselves on your machine.



4 BMW new-design inner bags for touring and pannier cases. Now the two-way zipper provides access from both sides.

5 BMW touring cases offer lots of space plus sturdy design, easily accommodating the BMW System Helmet both left and right. The seals are 100 % watertight and the locks (same key for all locks!) easy to reach.

BMW New Products 1992 BMW Motorcycle Equipment and Rider Wear – Product Numbers

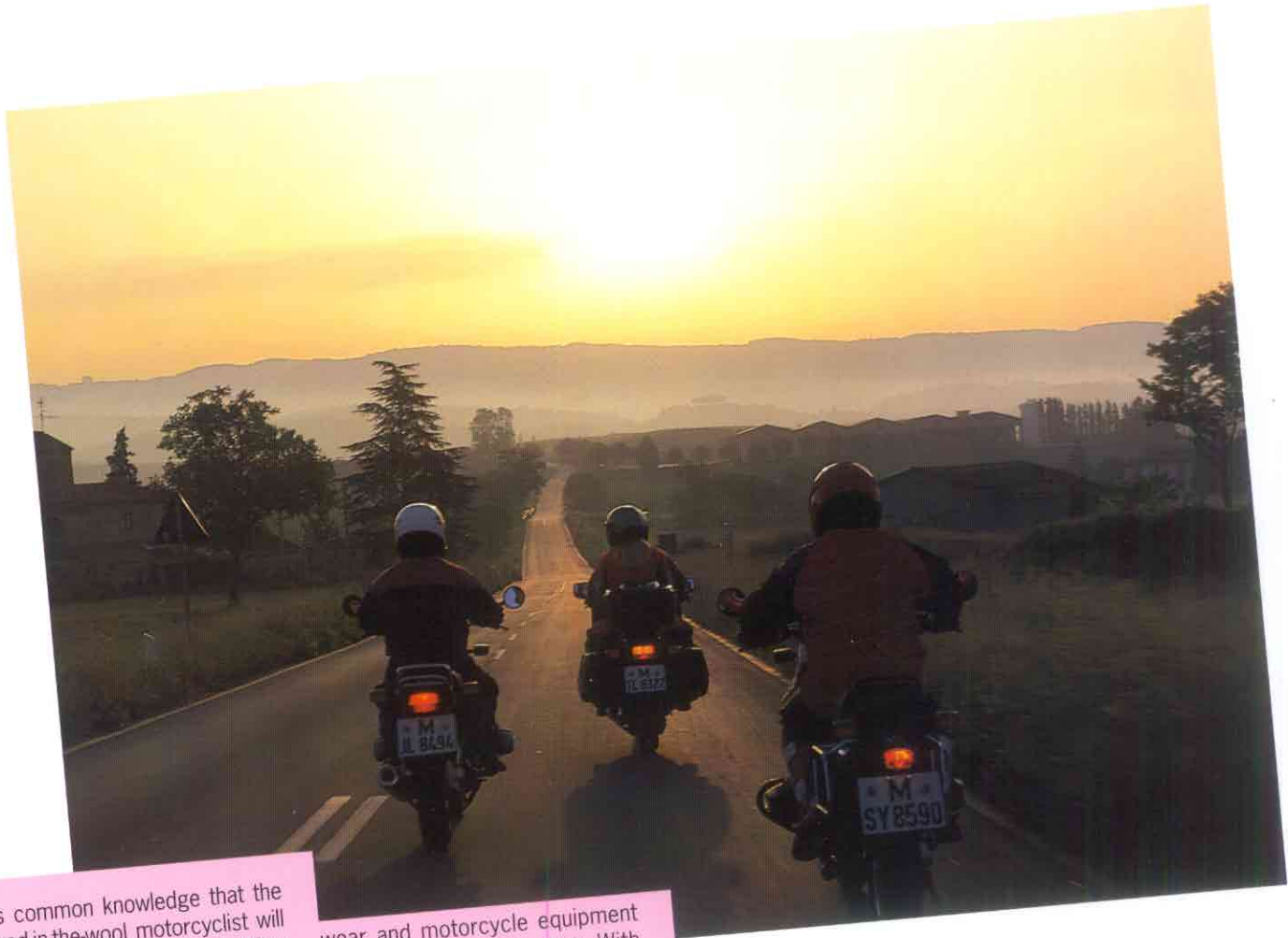
PRODUCT	PAGE	CAPTION	SIZE	REF.-NO.
BMW T-shirt Classic	3	1	S	72 60 2 319 562
			M	72 60 2 319 563
			L	72 60 2 319 564
			XL	72 60 2 319 565
			XXL	72 60 2 319 566
BMW Classic leather suit Ladies' jacket	3	2	8-R	72 60 2 319 446
			10-R	72 60 2 319 447
			12-R	72 60 2 319 448
			14-R	72 60 2 319 449
			16-R	72 60 2 319 450
			Men's jacket	38-R
	40-R	72 60 2 319 427		
	42-R	72 60 2 319 428		
	44-R	72 60 2 319 429		
	46-R	72 60 2 319 430		
	40-S	72 60 2 319 431		
	42-S	72 60 2 319 432		
	40-L	72 60 2 319 433		
	42-L	72 60 2 319 434		
	44-L	72 60 2 319 435		
Ladies' trousers			8-R	72 60 2 319 451
			10-R	72 60 2 319 452
			12-R	72 60 2 319 453
			14-R	72 60 2 319 454
			16-R	72 60 2 319 455
Men's trousers			38-R	72 60 2 319 436
			40-R	72 60 2 319 437
			42-R	72 60 2 319 438
			44-R	72 60 2 319 439
			46-R	72 60 2 319 440
			40-S	72 60 2 319 441
			42-S	72 60 2 319 442
			40-L	72 60 2 319 443
			42-L	72 60 2 319 444
			44-L	72 60 2 319 445
BMW Roadster leather gloves	3/4	3	6-6 1/2	72 60 2 319 460
			7-7 1/2	72 60 2 319 461
			8-8 1/2	72 60 2 319 462
			9-9 1/2	72 60 2 319 463
			10-10 1/2	72 60 2 319 464
BMW Roadster leather suit Ladies' jacket	4-7	5	8-R	72 60 2 319 415
			10-R	72 60 2 319 416
			12-R	72 60 2 319 417
			14-R	72 60 2 319 418
			16-R	72 60 2 319 419

PRODUCT	PAGE	CAPTION	SIZE	REF.-NO.
Men's jacket			38-R	72 60 2 319 395
			40-R	72 60 2 319 396
			42-R	72 60 2 319 397
			44-R	72 60 2 319 398
			46-R	72 60 2 319 399
			40-S	72 60 2 319 400
			42-S	72 60 2 319 401
			40-L	72 60 2 319 402
			42-L	72 60 2 319 403
			44-L	72 60 2 319 404
BMW Roadster leather suit	4-7	5	8-R	72 60 2 319 420
Ladies' trousers			10-R	72 60 2 319 421
			12-R	72 60 2 319 422
			14-R	72 60 2 319 423
			16-R	72 60 2 319 424
Men's trousers			38-R	72 60 2 319 405
			40-R	72 60 2 319 406
			42-R	72 60 2 319 407
			44-R	72 60 2 319 408
			46-R	72 60 2 319 409
			40-S	72 60 2 319 410
			42-S	72 60 2 319 411
			40-L	72 60 2 319 412
			42-L	72 60 2 319 413
			44-L	72 60 2 319 414
BMW Roadster leather boots	5	4	5	72 60 2 319 491
Ladies'			6	72 60 2 319 492
			7	72 60 2 319 493
			8	72 60 2 319 494
			9	72 60 2 319 495
			10	72 60 2 319 496
			11	72 60 2 319 497
Men's			6 1/2	72 60 2 319 494
			7	72 60 2 319 495
			7 1/2	72 60 2 319 496
			8	72 60 2 319 497
			9	72 60 2 319 498
			9 1/2	72 60 2 319 499
			10 1/2	72 60 2 319 500
			11 1/2	72 60 2 319 501
BMW chrome kit	6	6, 7, 8	in preparation	
BMW leather belt			75 cm	72 60 2 319 558
			85 cm	72 60 2 319 559
			95 cm	72 60 2 319 560
			105 cm	72 60 2 319 561
BMW GORE-TEX®	8	1	5	72 60 2 319 170
boots black			6	72 60 2 319 171
Ladies'			7	72 60 2 319 172
			8	72 60 2 319 173
			9	72 60 2 319 174
			10	72 60 2 319 175
			11	72 60 2 319 176

PRODUCT	PAGE	CAPTION	SIZE	REF.-NO.
BMW GORE-TEX® boots black Men's			6 1/2	72 60 2 319 173
			7	72 60 2 319 174
			7 1/2	72 60 2 319 175
			8	72 60 2 319 176
			9	72 60 2 319 177
			9 1/2	72 60 2 319 178
			10 1/2	72 60 2 319 179
			11 1/2	72 60 2 319 180
BMW GORE-TEX® suit Ladies'	8-9	2	8-R	72 60 2 319 182
			10-R	72 60 2 319 183
			12-R	72 60 2 319 184
			14-R	72 60 2 319 185
			16-R	72 60 2 319 186
			BMW GORE-TEX® suit Men's	8-9
38-R	72 60 2 319 188			
40-R	72 60 2 319 189			
42-R	72 60 2 319 190			
44-R	72 60 2 319 191			
46-R	72 60 2 319 192			
48-R	72 60 2 319 193			
50-R	72 60 2 319 194			
40-L	72 60 2 319 195			
42-L	72 60 2 319 196			
44-L	72 60 2 319 197			
46-L	72 60 2 319 198			
40-S	72 60 2 319 199			
42-S	72 60 2 319 200			
44-S	72 60 2 319 201			
46-S	72 60 2 319 202			
48-S	72 60 2 319 203			
BMW GORE-TEX® summer gloves black	9	3		
			7-7 1/2	72 60 2 319 478
			8-8 1/2	72 60 2 319 479
			9-9 1/2	72 60 2 319 480
			10-10 1/2	72 60 2 319 481
			11-11 1/2	72 60 2 319 482
BMW GORE-TEX® summer gloves white	9	3	6-6 1/2	72 60 2 319 483
			7-7 1/2	72 60 2 319 484
			8-8 1/2	72 60 2 319 485
			9-9 1/2	72 60 2 319 486
			10-10 1/2	72 60 2 319 487
			11-11 1/2	72 60 2 319 488
BMW GORE-TEX® winter gloves black	9	3	6-6 1/2	72 60 2 319 150
			7-7 1/2	72 60 2 319 151
			8-8 1/2	72 60 2 319 152
			9-9 1/2	72 60 2 319 153
			10-10 1/2	72 60 2 319 154
BMW hood shirt	9	4	S	72 60 2 319 120
			M	72 60 2 319 121
			L	72 60 2 319 122
			XL	72 60 2 319 123
			XXL	72 60 2 319 124

PRODUCT	PAGE	CAPTION	SIZE	REF.-NO.
BMW inner bags for: Top case 20 l Top case 35 l	10	1		72 60 2 319 128 72 60 2 319 129
BMW Multivario tank bag	10	2		72 60 2 319 240
BMW inner bags for: BMW pannier cases left right	11	4		72 60 2 319 125 72 60 2 319 126
for BMW touring cases	11	5		72 60 2 319 127
BMW pannier cases	11	5		consult your BMW Motorcycle Dealer

BMW MOTORCYCLE EQUIPMENT AND RIDER WEAR '92: QUALITY AND STYLE ALL IN ONE.



It's common knowledge that the dyed-in-the-wool motorcyclist will never settle for second best. After all, he has the know-how and experience to appreciate what he's getting. And he is fully aware of what really counts today and tomorrow.

Obviously, therefore, experienced riders of this caliber will only accept motorcycle wear and accessories offering top quality, superior safety, an excellent finish and, of course, beautiful design. Which is precisely what you get from BMW. Because we have always had a wide range of rider

wear and motorcycle equipment from A to Z or tip to toe. With more than 350 different items to choose from, all of them naturally coming in top BMW quality.

Each and every item is hand-picked, tested and manufactured with the most advanced production technologies to satisfy even the most discerning demands. All features are consistently improved, the latest results from research and practical experience going straight into the development of BMW motorcycle products. Because in catering for riders like you, we make it our pledge to offer you nothing but the very best.

