

BMW **RIDER EQUIPMENT** MOTORCYCLES



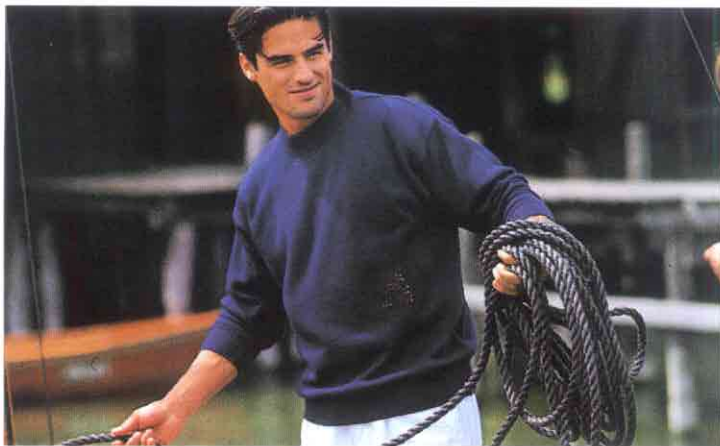
BMW LEATHER GARMENTS: FOREVER YOUNG.



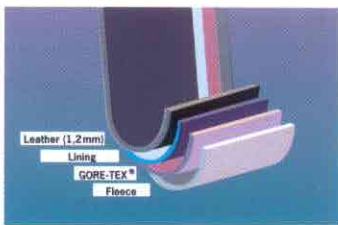
Character is back in demand. All the trends point towards classic clothing that is forever young: the two-piece suit reflecting a timeless style. It is fashioned from leather, the material towards which motorcyclists have always felt drawn because it feels so good and has built-in natural safety benefits.



An excellent reason, in our opinion, to extend the use of leather still further. It will also benefit from everything that today's R & D can provide. Turn the page to see how past and future versions of BMW rider equipment are a perfect match.



The multi layer structure accommodates all the various requirements. Carefully selected and specially impregnated nubuk cowhide, 1.2 mm thick, on the outside ensures safety. This leather's breathing properties are excellent. A synthetic sheet is used for the underlayer. The lining is formed by the detachable inner suit with GORE-TEX® membrane, which acts as a barrier against rain and wind when the motorcycle is being ridden. An additional cotton fleece layer in the shoulder, chest and instep zones optimises thermal insulation and is perforated for more effective ventilation.



Everything's been thought of. In really hot weather the inner suit with GORE-TEX® membrane can be unbuttoned and removed. Adjustment at the neck, arms and legs ensures a perfect fit.



Right picture:
Warm and dry? You will be with the BMW Monaco leather suit. First, specially developed impregnation prevents the leather from absorbing water. Second, the detachable inner suit with GORE-TEX® membrane ensures that no moisture reaches the skin. Thanks to the material's properties, water cannot get in from the outside, whereas moisture can easily escape from the inside outwards. Riders always feel comfortable in this "second skin", regardless of the weather.

Left picture:
In stormy conditions, the BMW Monaco Windstopper® pullover guarantees that you'll feel comfortable. The GORE company's Windstopper® keeps out the wind but has such excellent breathing properties that body moisture can evaporate. There is a choice of round or piqué collars.

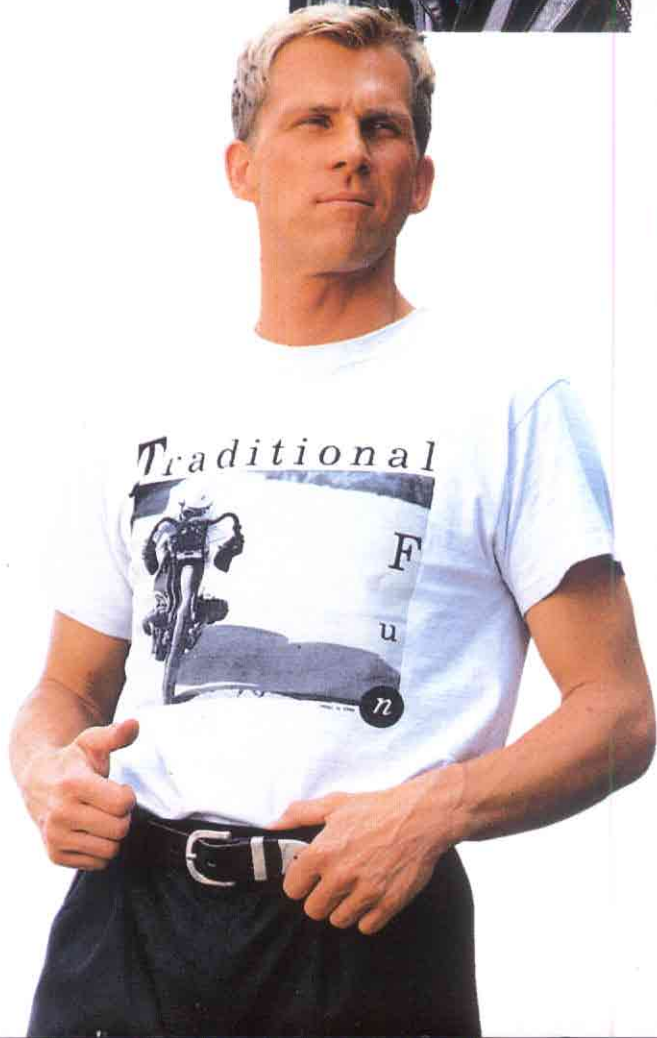
Exclusive styling, in soft nubuk cowhide with a delicate structure and an embossed motif.



Extra safety with SUPROTECT shoulder, elbow and knee protectors. An optional spine protector can also be inserted.



The most effective connection: the two-piece suit's jacket and trousers are transformed into a single garment by means of a zip fastener. Different cut for ladies' and gentlemen's suits.



Tradition in the details too: the top-quality BMW Classic T-shirt recalls the legendary record-beating run by Ernst Henne in 1937. It is made from high-quality cotton, with washable printed decor.

THE NEXT GENERATION OF LEATHER MOTORCYCLE SUITS.

What we have now achieved would previously have been considered unachievable. A two-piece leather suit with all the classic advantages – and absolutely waterproof too!

BMW can satisfy this wish for you: the BMW Monaco leather suit is the world's first rider's suit that combines perfect wind and water protection with the true wearer comfort of leather. Experience in all-weather rider suits served us well in the development of the next generation of leather suit to provide total protection against the elements.



Another classic which everyone will find useful: the BMW leather belt with silver-finish buckle.



Keen sports riders who need maximum protection have priorities that the BMW Marathon leather suit ideally satisfies: napa cowhide, 1.4 mm thick, preformed SUPROTECT protectors and a variety of the practical details that have made BMW rider equipment so popular. The BMW Marathon leather suit with its asymmetrical two-tone design is particularly fashionable in cut. There are matching gloves and boots. Feel free to compare our products with other makes. You'll discover how much more we do for you in terms of rider comfort and safety.

Right picture:
Safety first, the new BMW Marathon leather suit is entirely geared towards safety. Extremely abrasion- and tear-resistant napa cowhide, 1.4 mm thick, provides ample protection. Additional leather pads are attached at points prone to injury; SUPROTECT protectors at the knees, hips, shoulders, elbows/forearms afford the rider greater safety. Last but not least, an optional spine protector can be inserted into the jacket.

Bottom picture:
The Marathon leather suit is a snug fit and has been cut to correspond with the rider's sitting position. Stretch zones for the spine, knees and calves ensure rider comfort.



Our solution to a familiar problem: the suit's arms and legs simply do not ride up.



Everything under control: BMW Marathon gloves are reinforced between the thumb and index finger. Perforated sections ensure ventilation, and the back of the hand has extra-thick padding.



BMW Marathon leather boots are the perfect match for the suit, especially in terms of safety. This is enhanced thanks to inside and outside ankle protectors, shin protector and Kevlar abrasion protection. The zip fastener is located inside the boot and protected by a velcro fastener to avoid scuffing.

Designed for safety in the best sense of the word: the stylized silver centre stripes are not just decorative frills but perform a vital function – as high reflective surfaces.





BMW SYSTEM 3 HELMET: THE SUCCESS STORY CONTINUES.

Of course this helmet is still only available from BMW, even if other people would have dearly loved to come up with the idea themselves. The BMW System 3 helmet has enjoyed unrivalled success in recent years – and it's the world's top-selling integral helmet made from FRP. This tells us a lot, because motorcyclists regard what they wear on their head as a very serious matter.

BMW's System 3 Monaco helmet adds new sparkle to the range. It is painted in the current motorcycle colours and bears a lion motif.*

Our idea continues to exert its fascination: we only make one helmet but we make sure it's right. Everything is geared to maintaining the ingenious system that combines safety, versatility and comfort. The latest version is the BMW System 3 Monaco helmet. Adapter fittings for the off-road and jet helmet versions are included here for the first time – another of our unique star attractions!*



A fairly familiar sight now in top-class bob sport – even on the winners' podium at the Olympic Games. Eleven national bob teams have been equipped with our helmets, some for several years now.



Quick-change artists: each BMW System 3 helmet can easily be turned into a jet or off-road helmet. The appropriate accessories are available as part of the BMW range.*



Wearers of the BMW System helmet will find that not only the face area but also the entire head section are ventilated, for greater comfort at high outside temperatures. Fresh air flows along two ducts into the air-permeable inside padding and is discharged by vacuum at the ventilation flap. The swing-up chin piece is still unique, for example because it simplifies putting the helmet on or taking it off or when stopping to refuel – particularly for riders who wear glasses.



Reliable communication – the ECE-approved BMW two-way intercom* is the simple way for rider and pillion passenger to talk during the journey. The microelectronics are so compact that they fit inside the connecting plugs. For effortless communication up to speeds of about 180 km/h.

The BMW System 3 Exclusiv helmet* has been specially developed for riders who are looking for something out of the ordinary. It includes all the benefits of the successful BMW system, plus additional safety features. High-tech Dyneema®, high-tensile fibre is used for the helmet shell. Despite its low weight, this material can absorb a great deal of energy, is highly shatterproof and has above-average resistance to tearing. The top-quality multicolour paint finish is to an exclusive design.



The extensive range of accessories for each BMW System helmet includes this purpose-designed bag which can be attached to the motorcycle by means of a combination lock.



How about a little variety? These decorative tapes lend that personal touch to your helmet. The reflective foil is easy to attach and peel off at any time. Two colour versions are available.



A care product specially for helmets and visors. Insects and oily residues are dissolved rapidly and gently. Available in a 500 ml storage bottle or 30 ml refillable bottle for the journey.

* Not available in the UK.

THE LOOK OF MODERN TIMES.



Motorcycling is a state of mind that allows you to overcome anything the environment presents - but it's preferable to be appropriately equipped! Rider's clothing that's a perfect fit, with everything that is necessary on the journey, right down to the smallest detail. Clothing that protects you against any conditions you're likely to encounter on a motorcycle. Even a sudden cloudburst.



It's obvious that more and more riders prefer modern material garments that combine a wide variety of requirements.

BMW equipment reflects just this practical but stylish approach to motorcycling.



Superb footwear for everyday riding. BMW GORE-TEX® boots are made from cowhide 2.4 mm thick, are totally waterproof with excellent breathing properties and have a sturdy reinforced ankle joint. Comfort is ensured by the lining, which eliminates perspiration, the stretch pleat on the instep with velcro fasteners and the impact-absorbing sole.

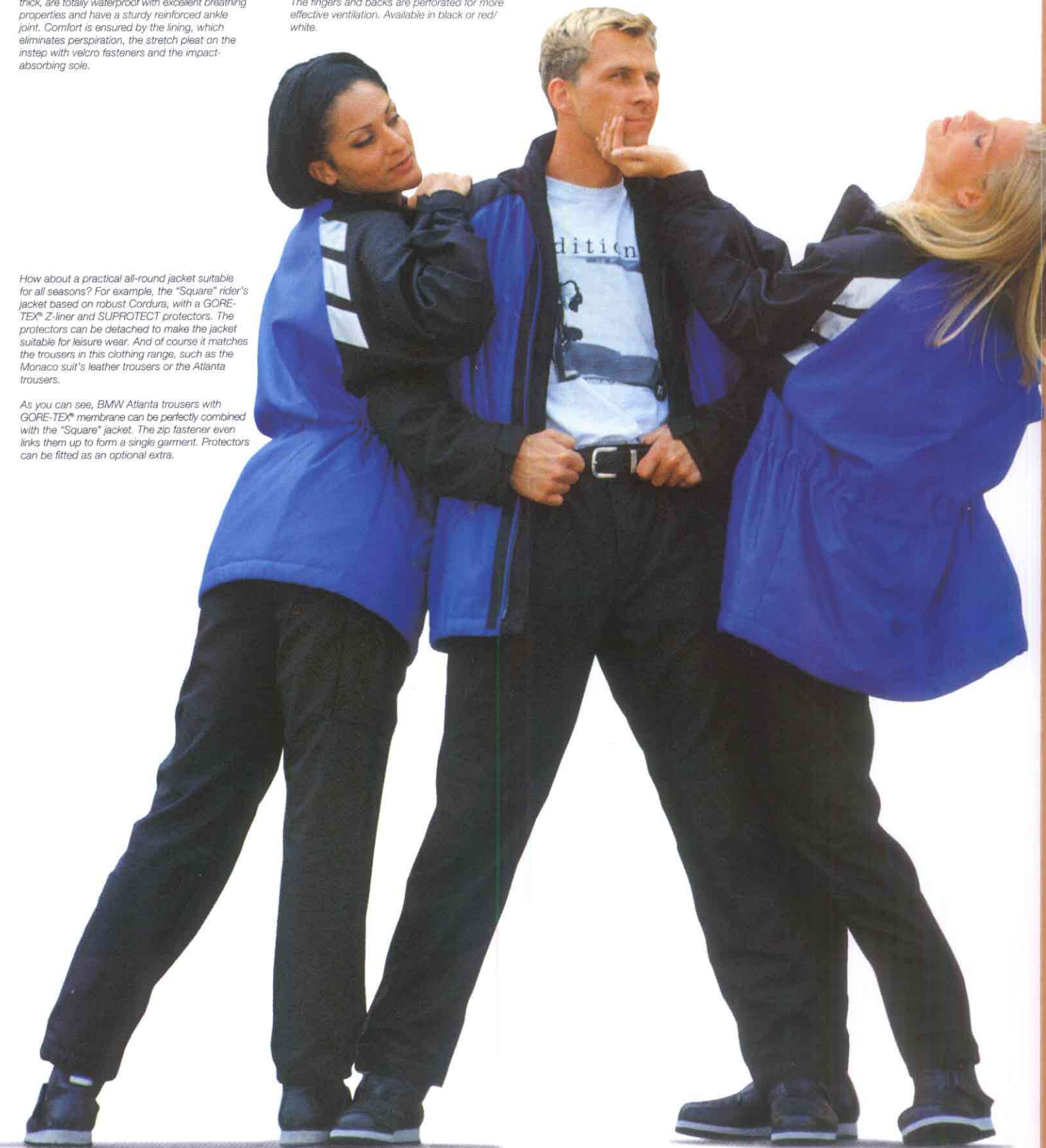


Gloves the sturdiest kind: BMW Enduro gloves provide a particularly high level of protection. The fingers and backs are perforated for more effective ventilation. Available in black or red/white.

Right picture: BMW has long since proved that waterproof rider clothing fitted with the GORE-TEX® membrane is successful in practice. Now we go a stage further with the BMW Madison suit – in the form of new materials which afford greater safety. The trousers can also be combined with the Aspen touring jacket.

How about a practical all-round jacket suitable for all seasons? For example, the "Square" rider's jacket based on robust Cordura, with a GORE-TEX® Z-liner and SUPROTECT protectors. The protectors can be detached to make the jacket suitable for leisure wear. And of course it matches the trousers in this clothing range, such as the Monaco suit's leather trousers or the Atlanta trousers.

As you can see, BMW Atlanta trousers with GORE-TEX® membrane can be perfectly combined with the "Square" jacket. The zip fastener even links them up to form a single garment. Protectors can be fitted as an optional extra.





BMW GORE-TEX® EQUIPMENT COMBINING THE BEST, WITH YOU IN MIND.

As with a great deal of rider equipment, this particular idea also came from BMW: a rider's suit that is as comfortable to wear in the sun as it is in the rain, that is waterproof and that embodies every practical safety aspect, thanks to its ultra-modern materials.

BMW found the answer by adopting the GORE-TEX® membrane. This unique material combines seemingly contradictory features: it's rainproof but has good "breathing" qualities. Unlike conventional rainwear, there is no build up of moisture on the skin, which would otherwise cause a feeling of excessive heat or cold. The rider's

concentration can be maintained for longer, quite simply because if you feel completely comfortable you can ride in a safer and more relaxed manner.

Ideal conditions, in other words, for everyday riding pleasure. You can be sure that the most up-to-date research is constantly being incorporated into our equipment range. For instance, the BMW Madison suit, which uses completely new materials – SUPROTECT and Schoeller K 300 – and therefore offers much higher safety reserves than any previous rider clothing generation.

BMW Schoeller K 300 is the name of our new formula for maximum rider protection. This unique material has been exclusively developed for BMW. It combines the advantages of polyamide and aramide fibres for exceptional tear and abrasion resistance. Only a small amount of moisture is absorbed, so that the suit does not weigh the wearer down on rainy journeys. BMW Schoeller K 300 is used for the first time in the Madison suit and the Aspen jacket. The ingenious "second skin", GORE-TEX® is a membrane with countless micro-fine pores. Although these allow tiny water vapour molecules to pass through, i.e. the body vapour, the larger rainwater molecules are kept out. As is the wind.



The new SUPROTECT protectors reflect the latest progress in safety research. Their principal feature is outstanding shock damping capability. Shoulders, elbows, forearms, knees and hips are given the most effective protection against injury. A spine protector is available as an optional extra and can be inserted into the pocket provided.



Total comfort: the BMW Madison suit provides ample freedom of movement while maintaining the snug fit essential for motorcycling. Jacket and trousers can be joined together securely by a zip fastener.



Nowhere to put all those small, but necessary items? There's plenty of space in this suit for everything. A detachable waterproof pocket can be attached on the back and is conveniently placed for the pillion passenger.



Velcro fastener and stretch pleat ensure that the trousers always fit snugly around the boot and do not ride up.

The BMW Aspen touring jacket with its distinctive long cut has a special Thinsulate™ thermal lining and offers all the advantages of the BMW Madison suit, such as perfect protection against the elements, excellent safety features and complete wearer comfort. It matches the trousers of the Madison suit perfectly.





The blue BMW GORE-TEX® suit is as fashionable as ever and has proved to be hugely popular with riders thanks to its versatility. This is hardly surprising, because the suit is almost perfect in terms of weather protection, as confirmed most impressively by the comparative test in the German Automobile Club's "Motorwelt" magazine (4/92).

The blue BMW GORE-TEX® suit offers excellent breathing properties and safety all in one. Flexible SECUFLEX protectors are inserted at particularly exposed areas beneath the robust cotton and Cordura outer layer.



The flexible water barrier with variable-width overlap in the sleeves is a detail that speaks for itself. Ingenious details such as this are typical of BMW rider's suits with GORE-TEX® membrane.



The waterproof inside pocket is particularly practical. Only the outer zip fastener needs to be opened to reach things quickly. The suit's dungaree-style trousers are extended to the upper part of the body, to ensure excellent thermal insulation for the kidney region.

BMW MIAMI SUIT: FOR THAT EXTRA LEISURE FREEDOM.



Motorcycling means enjoyment without complications. But it simply isn't enough to ride around in conventional leisure wear. Nor is it safe enough, even if, as the notorious saying goes, you're just "popping round the corner".

The BMW Miami suit is quick to put on, looks stylish, feels comfortable, yet offers the necessary safety too. It's a practical lightweight overall with GORE-TEX® membrane for the most effective weather protection available.

You won't find anything more practical than the BMW Miami suit - it can be slipped on in seconds.



If outside temperatures are around freezing point, these well-padded BMW winter gloves with GORE-TEX® membrane are just perfect: wind-resistant and waterproof. The upper material is a combination of nylon, Kevlar and leather. The gloves are available in two colours.



Top picture:
Riders who only make short trips, such as going to work, ought none the less to wear the appropriate clothing. The BMW Miami suit meets all such requirements. Safety is afforded by the new SUPROTECT protectors and Cordura as an outer material, while the GORE-TEX® membrane acts as protection against the rain.



Left picture:
The test in the German "Motorrad" magazine (10/93) showed that there are not many gloves with a GORE-TEX® membrane lining that can outdo the BMW summer gloves. The testers were particularly impressed by the high-quality finish and the rational design, including the long cuffs. Try them for size! You have a choice of three colour versions.

Top picture:
BMW functional underwear has been specially designed for the needs of motorcyclists and is a comfortable fit under any BMW rider's suit. Its distinctive qualities are also due to the material: Comfort is not only very kind to the skin but also ensures that body moisture is rapidly dispersed to the outside. This effectively prevents the body from becoming chilled, and is essential if the GORE-TEX® membrane in BMW rider's suits is to function properly.

WE HAVE WHAT YOU WANT, THE DETAILS ARE RIGHT TOO.

Those who compare BMW rider equipment with other products on the market will discover that BMW has thought of everything and can offer an excellent solution to each specific need. And also that BMW has attended to the very many seemingly minor details that brighten up day-to-day motorcycling.

It helps that our range is not only extensive but also uniquely up to date. With new ideas, advanced materials and contemporary design, we make sure that every buyer gets top quality, safety and practicality. We know that only if the rider is completely satisfied can freedom on two wheels be transformed into a unique experience.

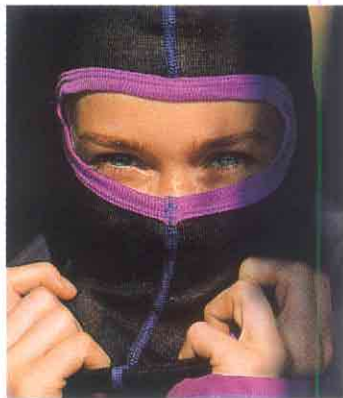


*Top right picture:
BMW kidney belt: elastic cotton and polyester fabric with thermal fleece at the back and a reinforced plastic inlay to support the kidney region. Velcro fasteners permit continuous adjustment.*

BMW towel: first-class cotton velour with top-quality, wash-resistant four-colour print. Size 75 x 150 cm. Motif: BMW R 1100 RS.

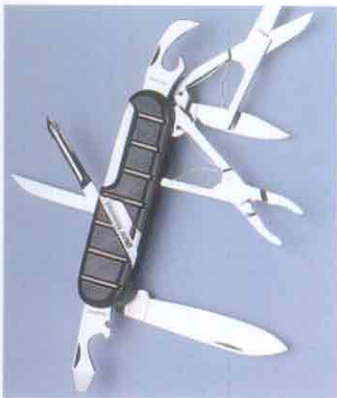


BMW R 1100 RS sweatshirt: with four-colour motif of the new BMW Boxer and embroidered motif on the front. The sweatshirt's shape is maintained by the choice of materials: a durable combination of 50 % cotton and 50 % acrylic.



BMW storm hood: choice of flexible silk or cotton, with particularly smooth seams. Extended neck section and reinforced front neck section to prevent draughts.

BMW key case: in leather, with a long chain for the ignition key; your other keys are packed away inside the case, where they do not jangle or scratch the paintwork.*

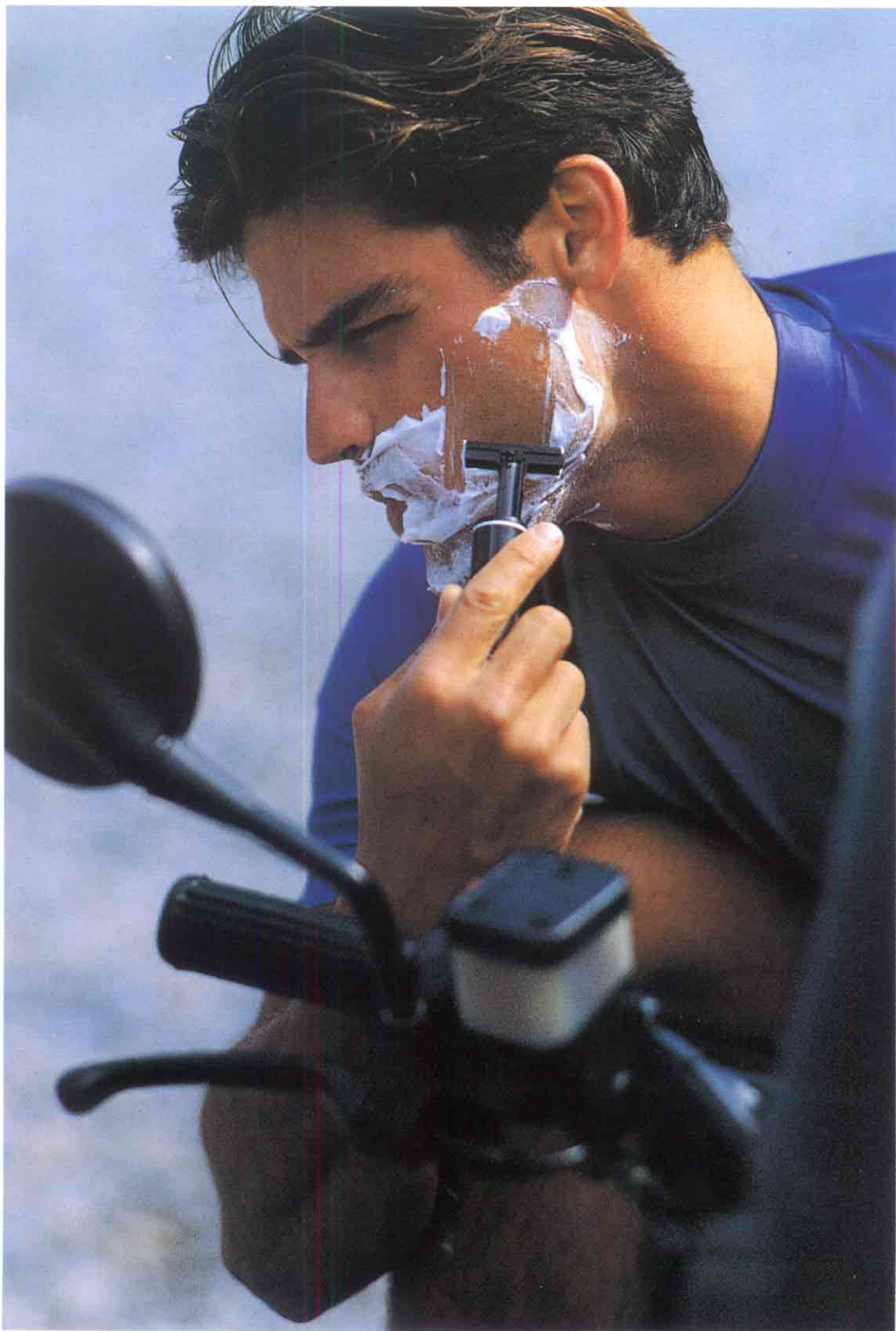


BMW manicure set: attractively designed, top-quality nail scissors, file and tweezers that take up next to no space at all. Black surfaces are Teflon® coated. The leather case is lined with velvet. Ideal as a gift.

BMW pocket knife. Top-quality Solingen stainless steel, extremely durable even with heavy use. With eight attachments for 10 functions, e.g. two blades, combination pliers with wire cutters and Phillips-head screwdriver.

BMW Magic Razor®: ideal for journeys because the blade is retracted by means of the rotary button in the handle, and the razor itself takes up hardly any space. Suitable for standard razor blades which are readily available.

**Not available in the UK.*



ACTIVE LINE: FOR THOSE WHO WANT MOTORCYCLING – AND MORE!



Our extensive range has for a long time consisted of more than pure motorcycle clothing. Active Line, BMW's multifunctional product range, is suitable for almost any type of sports activity. It's therefore ideal for riders who spend their leisure time not just on the motorcycle itself but go sailing, ski-ing or hang gliding – in fact anything that is fun to do. Active Line epitomises unlimited Fun, Freedom, Action and Adventure.

Try on the Active Line Adventure suit – the big all-round talent in our range. Where can you see it? At your local BMW Motorcycle Dealer.

Everything you need as a motorcyclist, from clothing and accessories to Finance, Insurance, Assistance and Assurance can be found at your local BMW Dealership.



The motorcycle models illustrated here show equipment available in the Federal Republic of Germany. They may also include optional extras which are not part of the standard delivery specification and are only available at extra charge. Due to specific national requirements and laws, not all models are available in every country. Please contact your BMW importer or local BMW Motorcycle Dealer for information on the available models and the precise equipment range. Subject to design and equipment modifications.

© BMW Motorrad GmbH + Co., Munich, Germany
Not to be reproduced wholly or in part without the permission of BMW Motorrad GmbH + Co.
This catalogue has been printed on environmentally friendly paper.
Printed in Germany 8/93

01 21 9 797 331

